

Product information

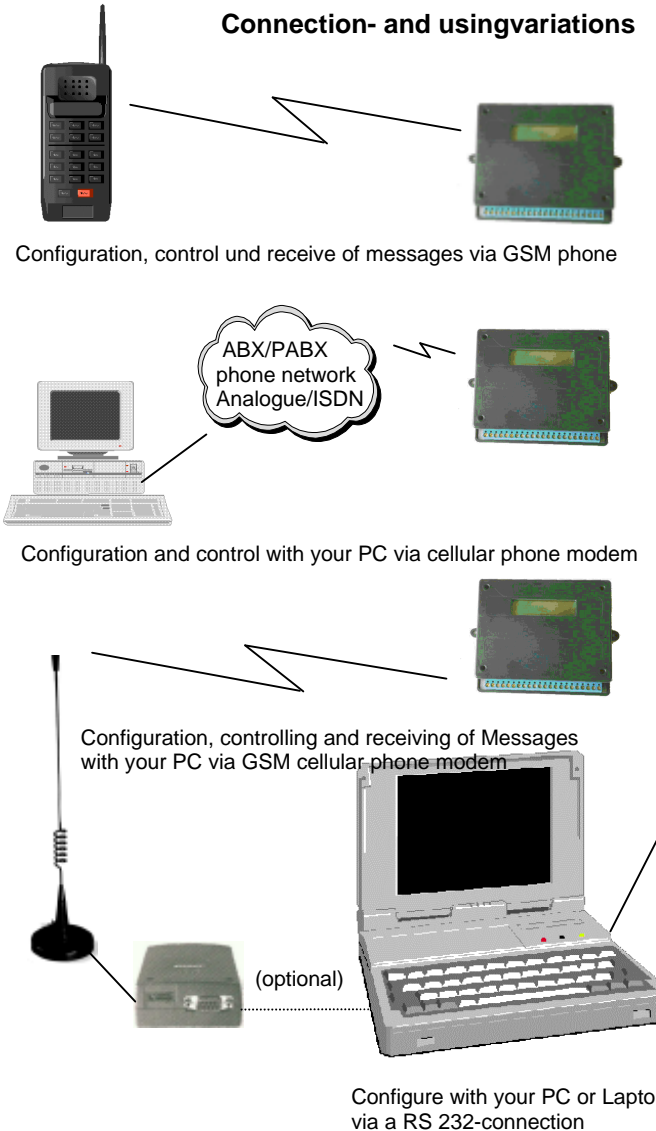
Technical data

Data transmission	via GSM-Modem (e.g. Siemens M1, SAGEM, ERICSON, NOKIA) as GSM SMS-Message
Display	2 line LCD-Display (16 characters per line) for showing the state of all in- and outputs (including analog values) and state-information about the DxGO-module
phone-number-memory	Capacity for 128 phone-numbers with 20 characters each in a non volatile memory (EEPROM)
Textmemory	Capacity for 200 text-messages with 100 characters each in a non-volatile memory (EEPROM)
retransmissions or missing	1-10 retransmission in case of reconfirmation (configurable)
Connectors	<ul style="list-style-type: none"> - 12 digital inputs (potential free contacts) - 4 Relays-outputs - 4 analog inputs (optional) - 9-pin Sub-D - Male (RS 232) for programming - 9-pin Sub-D - Male (RS 232) for GSM radio modem - power-supply with protection of connection
Power supply	8-12V=, 250mA
Dimensions	L: 130mm, W: 110mm, H: 40mm

Your first class dealer:
 Döbelt Datenkommunikation
 Gustav-Meyer-Allee 25
 D-13355 Berlin, Germany
 Tel.: +49(0)30-46307616
 Fax: +49(0)30-46404507
<http://www.doebelt.de>; EM: info@doebelt.de

Döbelt Datenkommunikation GSM-S2

Connection- and using variations



DxGO - GSM-Control

Remote control and supervision

