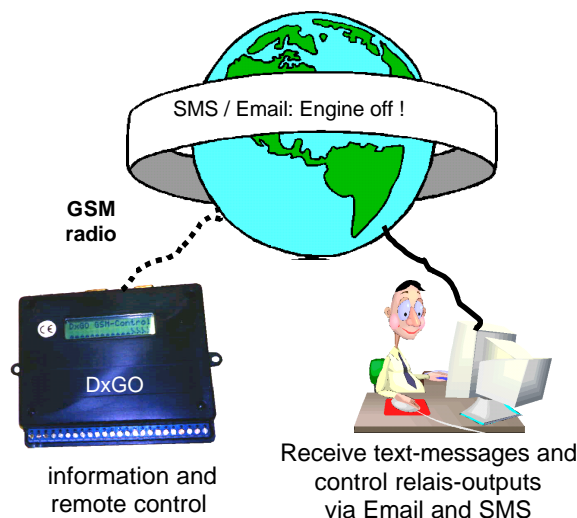
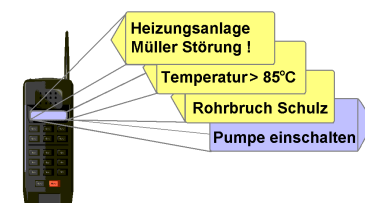


DxGO Light/Classic Manual

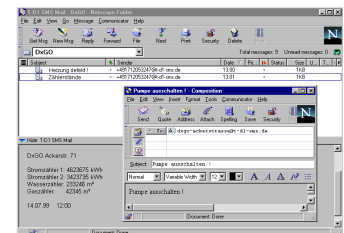
April, 7, 2000 (all changes reserved)



Configuration Software



SMS Control Center (mobile Phone)



Control and supervision by Email with standard browser

Features

- Event messages via GSM as SMS, FAX, Email or Pagercall
- Remote control and Status request with SMS and Email
- Instruction confirmation by DxGO
- SMS exchange between different GSM - providers
- cyclical routine call
- automatic time + date synchronisation
- debumped inputs
- Self-supervision



Copyright by:
Döbelt Datenkommunikation
<http://www.doebelt.de>
Gustav-Meyer-Allee 25, D-13355 Berlin
Tel.: +49 (0) 30-46 307 616
Fax: +49 (0) 30-46 404 507
Email: info@doebelt.de
www: www.doebelt.de

1. Introduction

We congratulate you for buying the DxGO-Box. It is possible for you to send event messages as SMS, FAX, Email and Pagercall. Furthermore you are able to switch a relais-output on and off by sending an Email or a SMS-Message.

In the DxGO Plug&Play Box you will find the following parts:

DxGO, radio modem for GSM 900, cable for radio modem, GSM-antenna with adapter, 230V AC Power supply, interface cable, Wizard-Configuration-Software Win 95/98/NT.

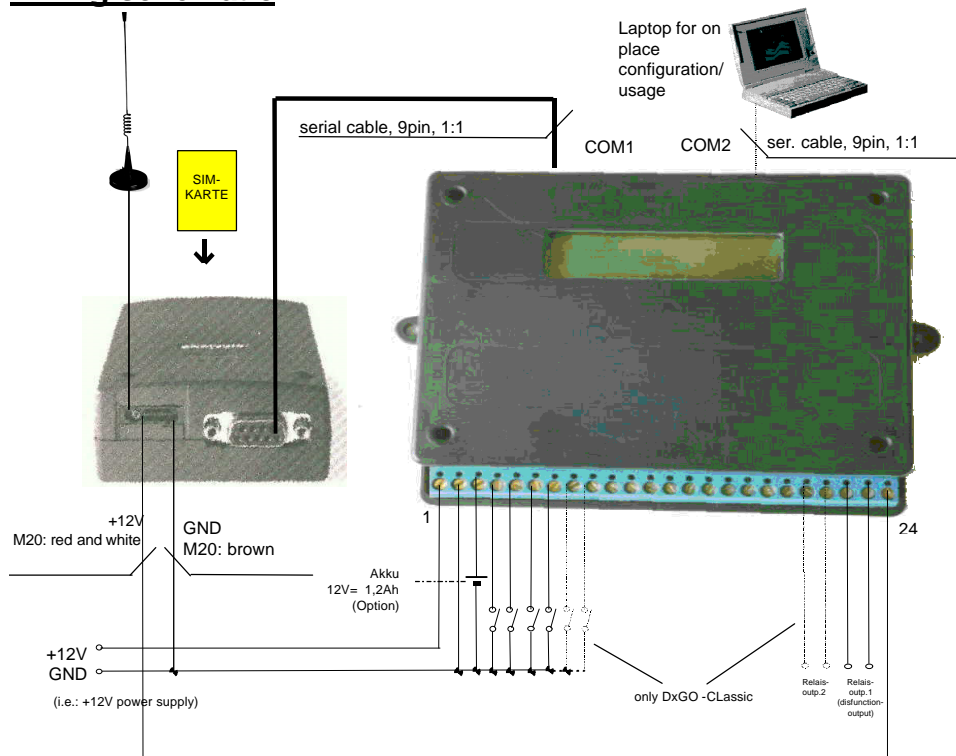
2. Some applications for supervision and remote control of:

electrical installations, process monitoring, heating- and air-condition systems, air and water measurement systems, power plant, escalators, houses, buildings, burgerly alarm system, vending machine, water supplier and cleaning, etc..

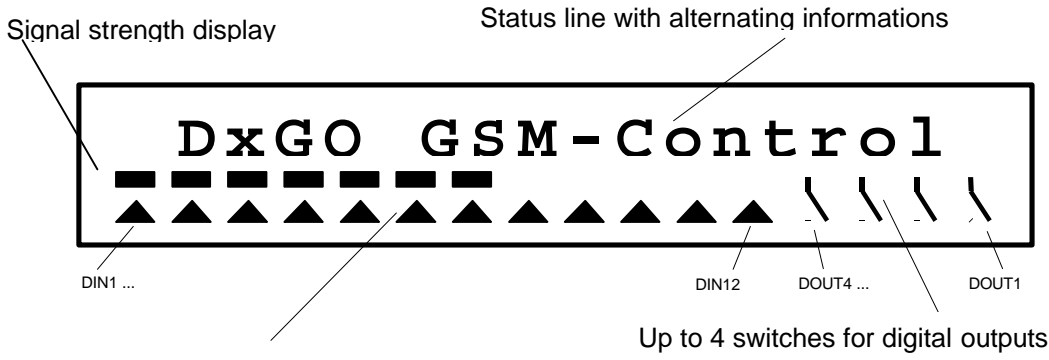
3. Getting started

For the first usage, connect the devices, following the wiring schematic below, together. You need for running the DxGO a **GSM-SIM-card** for the GSM radio modem. We recommend the usage of a **Data-Card** or with lower functionality, a prepaid card. You will get this cards from your GSM network provider. Otherwise we will deliver you this card or you can use a card from an other mobile phone.

4. Wiring schematic



Possible displays:
 Selftest
 <Selftest>
 08.11.99 13:24
 <Date time>
 V2.0.2 (001243)
 <Version number>
 ACTIV: 00.00.00
 (device state)
 <I02.H Retry 2.0
 <Message replay>



5. Configuration

The DxGO is already complete preconfigured. The only missing information's (PIN and phone number) you can configure in two different ways.

5.1 Configuration via mobile phone:

- Put the SIM card in your mobil phone
- Change the PIN to „1111“. (detailed information for changing the pin-code you will find in the instruction manual from your mobile phone)
- Put the SIM-card in the GSM-Modem
- Switch the DxGO and GSM radio modem on
- Control the strength of the signal with the display bar (≥ 3 bars)
- The DxGO needs to know were the event-messages has to be transmitted.

Transmit the following SMS to the phone number of the DxGO:

INIT <your own mobile phone number> [<DxGO-phone number>]

Example.: INIT 491723821220 4917232773090

The DxGO-phone number is necessary for the time synchronisation. (How a SMS will be transmitted , you will find in the instruction manual of your mobile phone)

- DxGO is now ready for use, many success!

5.2 Configuration via Wizard

With the delivered Wizard and with your personal computer you can easy configure the DxGO device.

- Put the SIM-card in the GSM-Modem
- Supply the DxGO with power
- Connect your PC with the DxGO with the attached cable
- Insert the disk in your PC an start the program with „**SETUP**“
(for the following steps you will be guided by the wizard;
for the different menus, look the attached screen shots below)
- Transmit at the end of the configuration the configuration data to the DxGO
- Connect the DxGO to the GSM radio modem with the DSUB9 cable and switch both devices on; after power on wait about 30s.
- Check the signal strength by looking at the display bars (≥ 3 bars) .
- DxGO is now ready for use, many success!

location-name



Network provider and PIN



Time and date synchronisation



Choose the service



Configuration overview

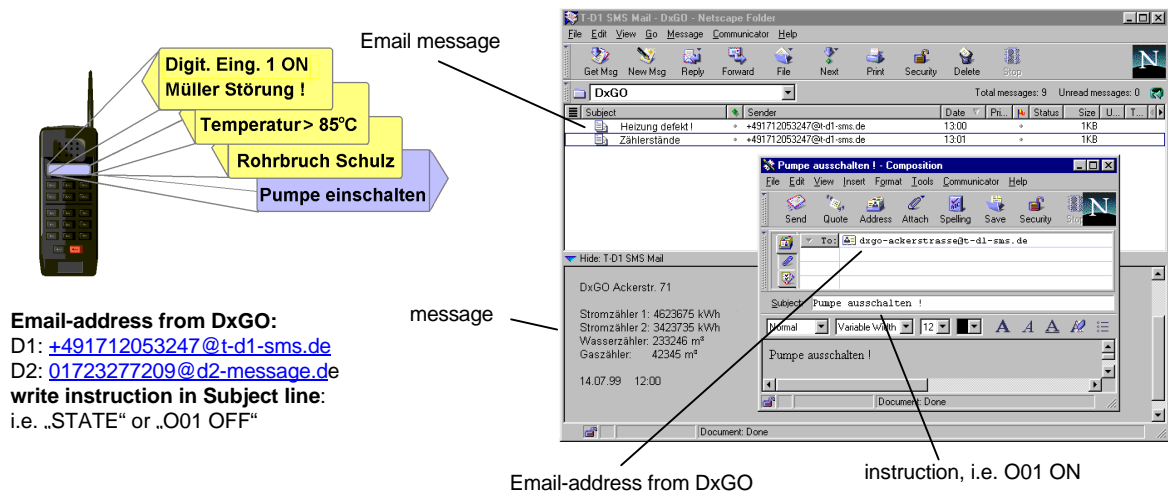


Download



6. Receive and Transmit Messages

DxGO is now ready for use and you can transmit and receive messages. It is possible to receive event messages by SMS, Email, Pager or FAX. Instructions to the DxGO can be done by SMS and Email. How to receive and transmit messages via SMS or Email in combination with the DxGO you will find in the following explanations:



Transmission of events-messages

With a wire connection i.e. between Pin 2 and 4 at the interface row from DxGO, you will initiate the transmission of the message for input no 1. In the DxGO display you will see immediately the dialled phone number and the beginning of the transmitted message text. The activated input will be shown with a triangle, direction to the button (low).

Switching Outputs

It is possible to transmit an instruction to the DxGO via SMS and Email. The relays-outputs can be changed in the standard configuration with the following SMS (Shortname and High/Low state):

SMS: **001 ON** or **001 OFF** to the phone number of the DxGO.

001 (Oh zero one) stands for output 1 (Output 01)

ON stands for low-state (relais contact :closed)

OFF stands for high-state (relais contact: open)

The states of the switches will be shown in the display of the DxGO.

Please have attention of the correct programming of the SMSC by transmitting SMS from one network provider to another (D1<->D2),

D1: +491710760000

D2 network intern: +491722270000

D2 network to other: +491722270333

7. Technical Data DxGO-Light/Classic

- Supply voltage: 230V/50Hz or 12V=
- 2 line LCD-display for permanent control of the working state
- Measurement: (LxHxD) 130x40x110 mm³
- 4/6 Inputs for connecting potential free contacts
- 1/2 relais output (switch power: 0,5A by125V or 1A by 24V)
- Connection point for accumulator buffering during power loss, with integrated accumulator – charging circuit